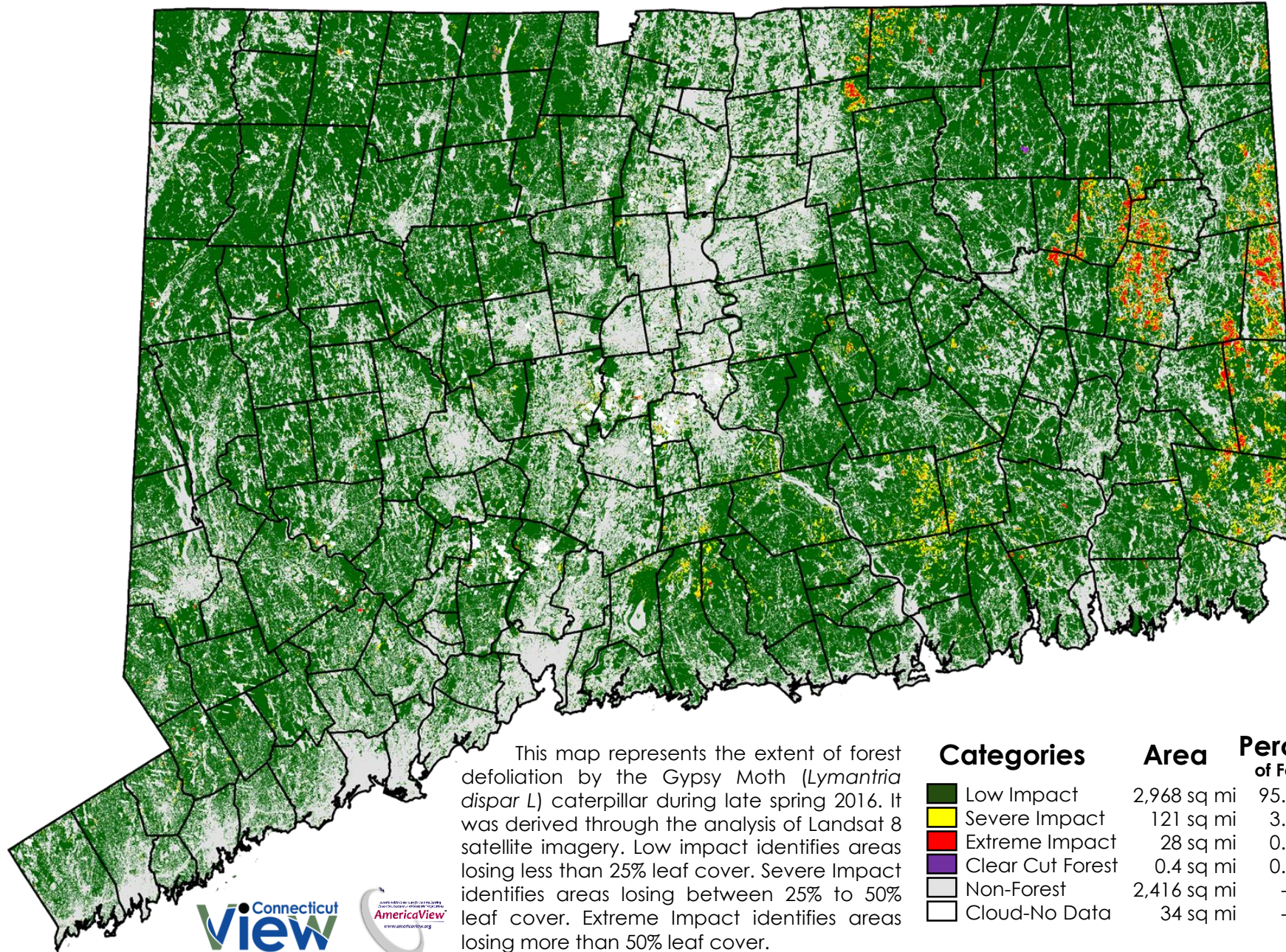


Connecticut Gypsy Moth Caterpillar Defoliation Extent 2016



This map represents the extent of forest defoliation by the Gypsy Moth (*Lymantria dispar* L) caterpillar during late spring 2016. It was derived through the analysis of Landsat 8 satellite imagery. Low impact identifies areas losing less than 25% leaf cover. Severe Impact identifies areas losing between 25% to 50% leaf cover. Extreme Impact identifies areas losing more than 50% leaf cover.

Categories	Area	Percent of Forest
Low Impact	2,968 sq mi	95.2 %
Severe Impact	121 sq mi	3.9 %
Extreme Impact	28 sq mi	0.9 %
Clear Cut Forest	0.4 sq mi	0.0 %
Non-Forest	2,416 sq mi	--
Cloud-No Data	34 sq mi	--

